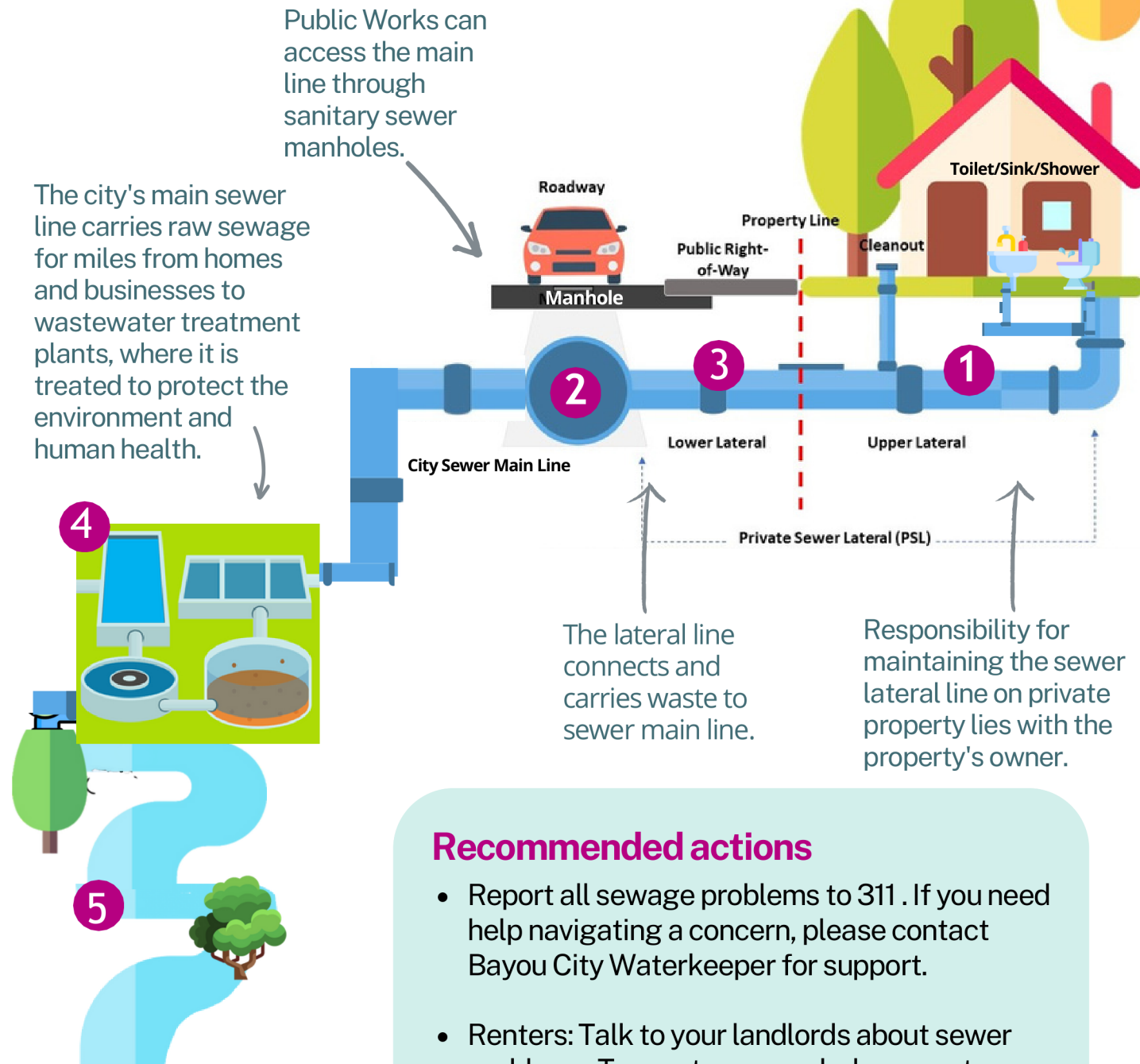


# Know your sewer system

## Parts of a sanitary sewer system:

- 1 Sewer lateral pipe (drains from toilet, sink, and showers)
- 2 Manhole
- 3 Main sewer line
- 4 Municipal wastewater treatment plant
- 5 Outflow into natural systems

From Bayou City Waterkeeper's  
*Justice in the Sewers Hub*



## Recommended actions

- Report all sewage problems to 311. If you need help navigating a concern, please contact Bayou City Waterkeeper for support.
- Renters: Talk to your landlords about sewer problems. To create a record, also report any issues to Houston 311.

**Learn more:** <https://bayoucitywaterkeeper.org/justice-in-the-sewers-hub/>

## 1 Repairs to private sewer lateral lines, including clogs in toilet, sink, & shower

Clean Up Service: ( ) \_\_\_\_\_

Home Insurance: ( ) \_\_\_\_\_

Plumber: ( ) \_\_\_\_\_

Houston Public Works or 311\*\* ( 832 ) 395 2500

## 2 Overflows from manholes

Houston Public Works or 311\*\* ( 832 ) 395 2500

Houston, Texas 3-1-1 Help and Information (houstontx.gov)

## 3 Sewer main line

Houston Public Works or 311\*\* ( 832 ) 395 2500

Houston, Texas 3-1-1 Help and Information (houstontx.gov)

## 4 Odors and discharges of untreated sewage into local neighborhoods, streets, greenspaces, or water bodies

Houston Public Works or 311\*\* ( 832 ) 395 2500

To report pollution to ( 888 ) 777 3186 or TCEQ please contact:

<https://www.tceq.texas.gov/assets/public/compliance/monops/complaints/complaints.html>

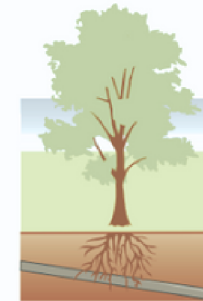
For extra assistance or if you need help finding your representatives by address and zip code, please visit:  
<https://house.texas.gov/members/find-your-representative/>  
or <https://www.houstontx.gov/council/whoismymcm.html>

# Help prevent overflows

Protect sewer pipes, the treatment system, and our waterways



Inspect your side sewers and septic systems regularly.



Prevent tree roots from breaking sewer pipes.



Dispose of garbage and hair in the trash can, not the toilets.



Reduce the amount of rainwater entering the sewer system. Choose rain gardens, rain barrels, pervious pavement and green roofs.



Dispose of grease in the trash can or recycle it.



Prevent harmful chemicals from entering the wastewater system. Use simple, biodegradable household and personal products.



Prevent medicines from entering the wastewater system. Return medicines to a pharmacy or dispose in the trash can.



Store hazardous materials in spill proof containers, dispose at hazardous waste facilities.



Keep storm drains clear